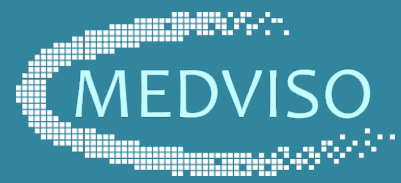


Strain Analysis Module



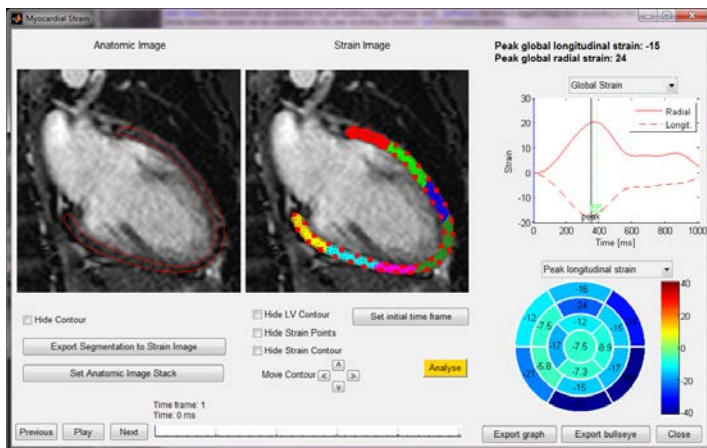
- In Segment package

CE-marked and FDA 510(k) approved vendor independent module to measure and analyze regional myocardial function using tagged or cine MR images.

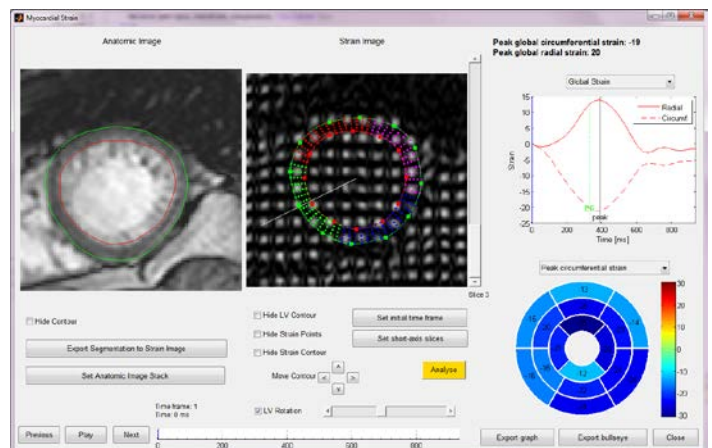
Regional myocardial function

The Strain analysis module in Segment provides the technology to measure regional myocardial function. Regional myocardial function is superior to global functional measures to detect diseases at early stages, since healthy regions of the myocardium compensate for affected regions, which is not detected by global measurements.

Feature Tracking



Tagging Analysis



Application

- Short-axis and long-axis images
- Left ventricle (LV) and right ventricle (RV)
- Feature tracking in cine and Tagging analysis in tagged images

Strain measurements

- Radial, circumferential and longitudinal strain reported globally and sector wise
- Strain over time and peak strain
- Strain rate, rotation and torsion

Results

- Myocardial tracking over time in both cine and tagging images
- Strain measurements over time presented in graph
- Bullseye plot in a 17 segment model depicting peak strain measurements
- Export functionality for movies, images and strain values

Input to Strain module

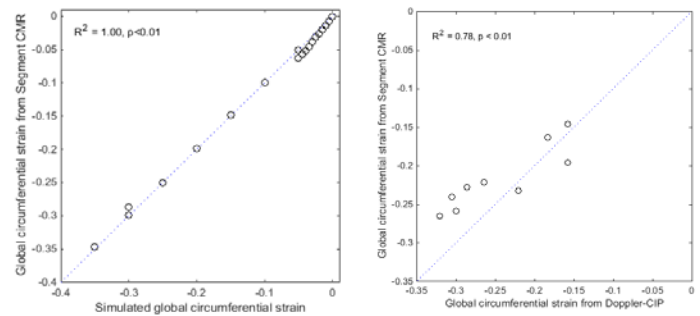
LV and/or RV segmentation in one diastolic time frame in selected slices

Medviso support

We work in close collaboration with researchers and included in the Strain module license we can implement custom functionality according to your requests.

Validation

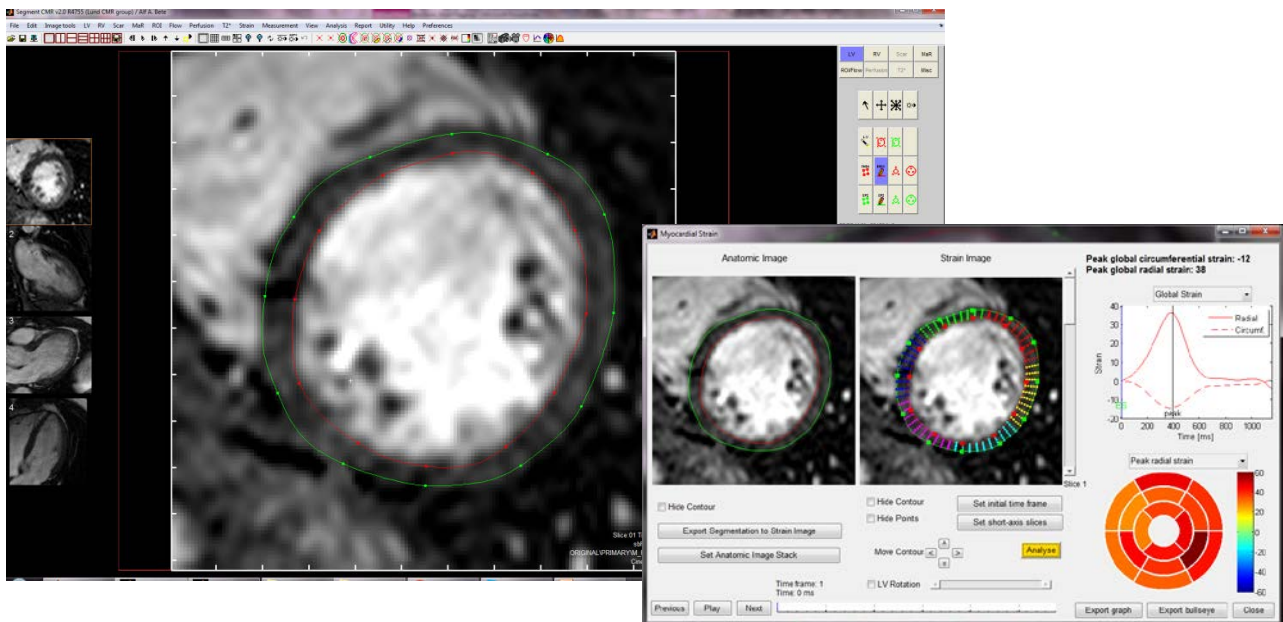
The Strain analysis module have been extensively validated in both phantom data and patient data. The validation have been performed at several different sites, with images from both 1.5T and 3T MR scanners from different vendors. The result show good agreement to the reference standard and with high reproducibility between users.



Please see medviso.com/research/how-to-refer and medviso.com/research/publication for publications.

Strain analysis module integrated in software package Segment

The Strain analysis module is an integrated component to the software package Segment provided by Medviso AB. The Segment software package is a complete and advanced cardiac MR analysis software to quantify cardiac volumes, function and viability, and measure blood flow and perform strain and relaxometry analysis. The software package is provided for both clinical usage as well as research.



Regulatory status

The software package Segment includes both the clinical software SEGMENT CMR and the research software SEGMENT. SEGMENT CMR bears the CE marking of conformity and is FDA 510(k) approved with device number K163076. SEGMENT is FDA 510(k) approved with device number K090833.

Medviso AB was founded in 2007 by Associate Professor Einar Heiberg as a spin-off from research at Lund University, Sweden.

www.medviso.com
info@medviso.com
Phone: +46-76-1836442

Medviso AB | Griffelvägen 3 | SE- 224 67 Lund | Sweden

FREE EVALUATION
LICENSE AT
WWW.MEDVISO.COM